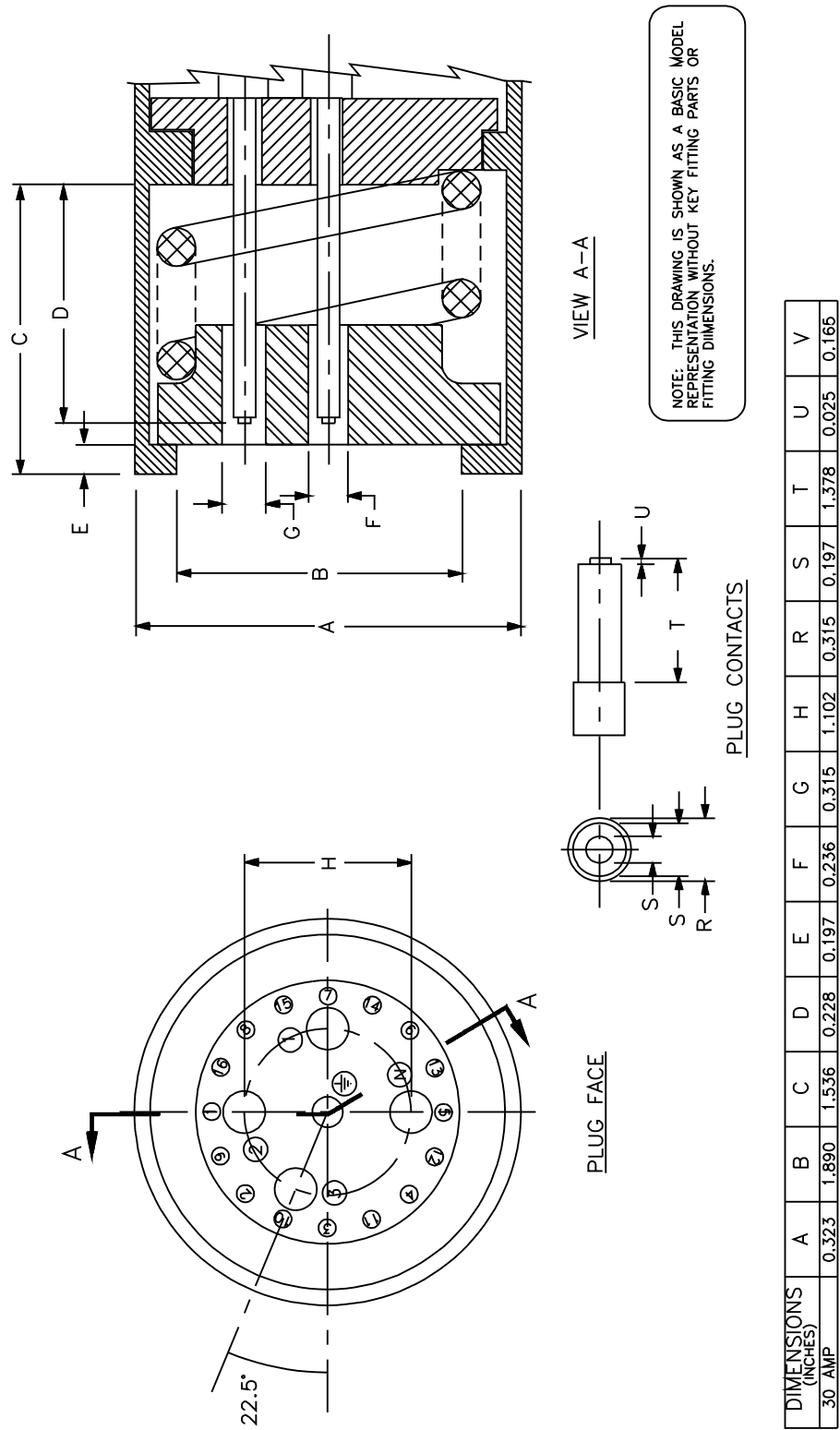


Figure C3.6



SM1322

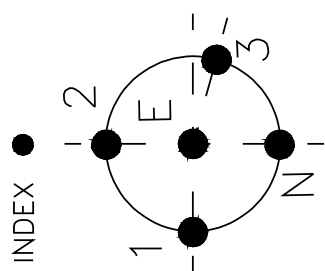


Figure C3.7

DIAGRAM (LEFT) SHOWS THE 3-WIRE, 4-WIRE, AND 5-WIRE CONNECTIONS FOR A PARTICULAR VOLTAGE ASSOCIATED WITH THE KEYING POSITION NUMBER

CONTACT NUMBERS:
N=NEUTRAL
E=EARTH

P=NUMBER OF POLES
(n)= REF. NUMBER

VOLTAGE PHASE CONNECTIONS:			
	(2) 2P+E		(3) 3P+E
	(4) 1P+N+E		(5) 1P+N+E
	(6) 2P+N+E		(7) 3P+N+E
	(8) DC± +E		(9) DC± +E

SM1323

Figure C3.8

VOLTAGE ASSIGNMENTS		
POSITION	VOLTAGE	FREQUENCY
1	380–440 AC	50 HZ
3	220–240 AC	50 HZ
4	480 AC	60 HZ
7	240 AC	60 HZ
11	200–220 AC	400 HZ
12	200–220 AC	200 HZ
14	600 AC	60 HZ
16	208 AC	60 HZ
17	120–208/240	60 HZ
19	660 AC	50 HZ
20	250 DC	–
21	440/240 AC	60 HZ

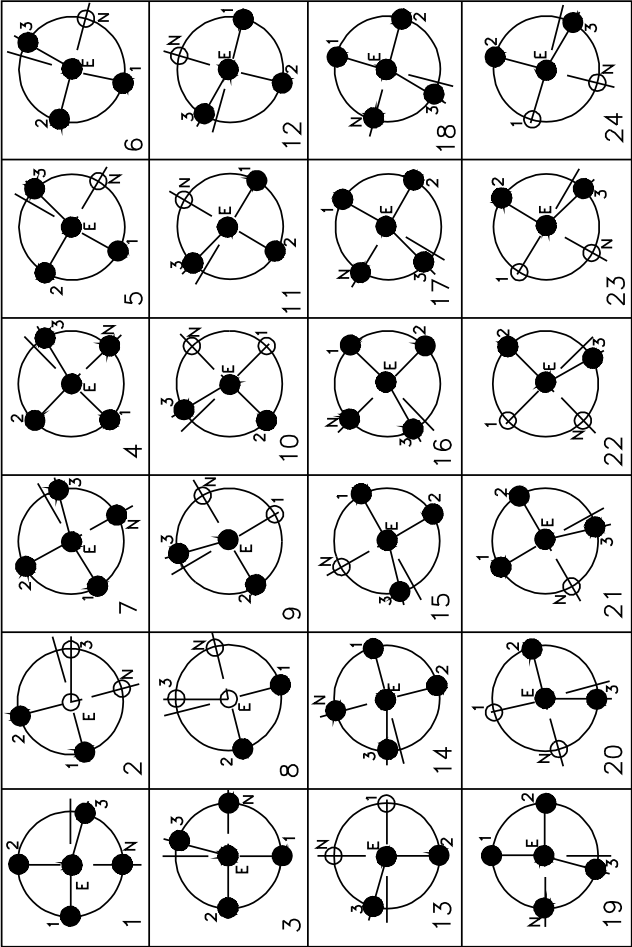
MAXIMUM VOLTAGE 600V A.C./250V D.C.

12 POSITIONS ARE LEFT FREE TO COVER PARTICULAR NEEDS:

- POSITION 18 FOR A.C. 3-PHASE WITH NEUTRAL.
- POSITIONS 5, 6, AND 15 FOR A.C. 3-PHASE
- POSITIONS 2, 8, 9, 10, 13, 22, 23, AND 24 FOR CURRENTS USING 2 OR 3 WIRES, OR FOR DIRECT CURRENT.

FOR TYPE DS: 20,30,60,100,AND 200 AMP SIZES
DR: 50,90,AND 150 AMP SIZES

RELATIVE CONTACT POSITIONS FROM FRONT OF RECEPTACLE



SM1324

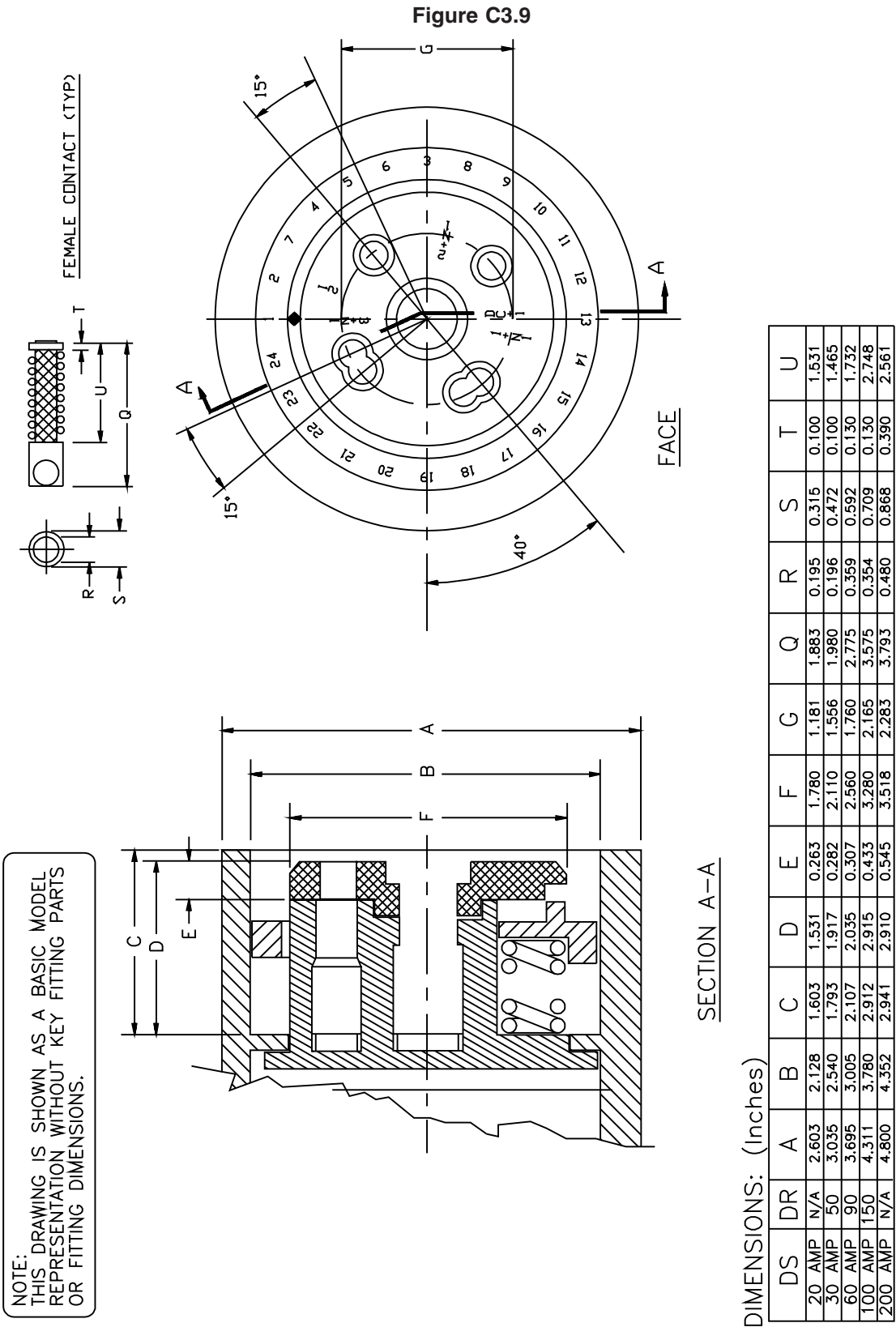


Figure C3.10

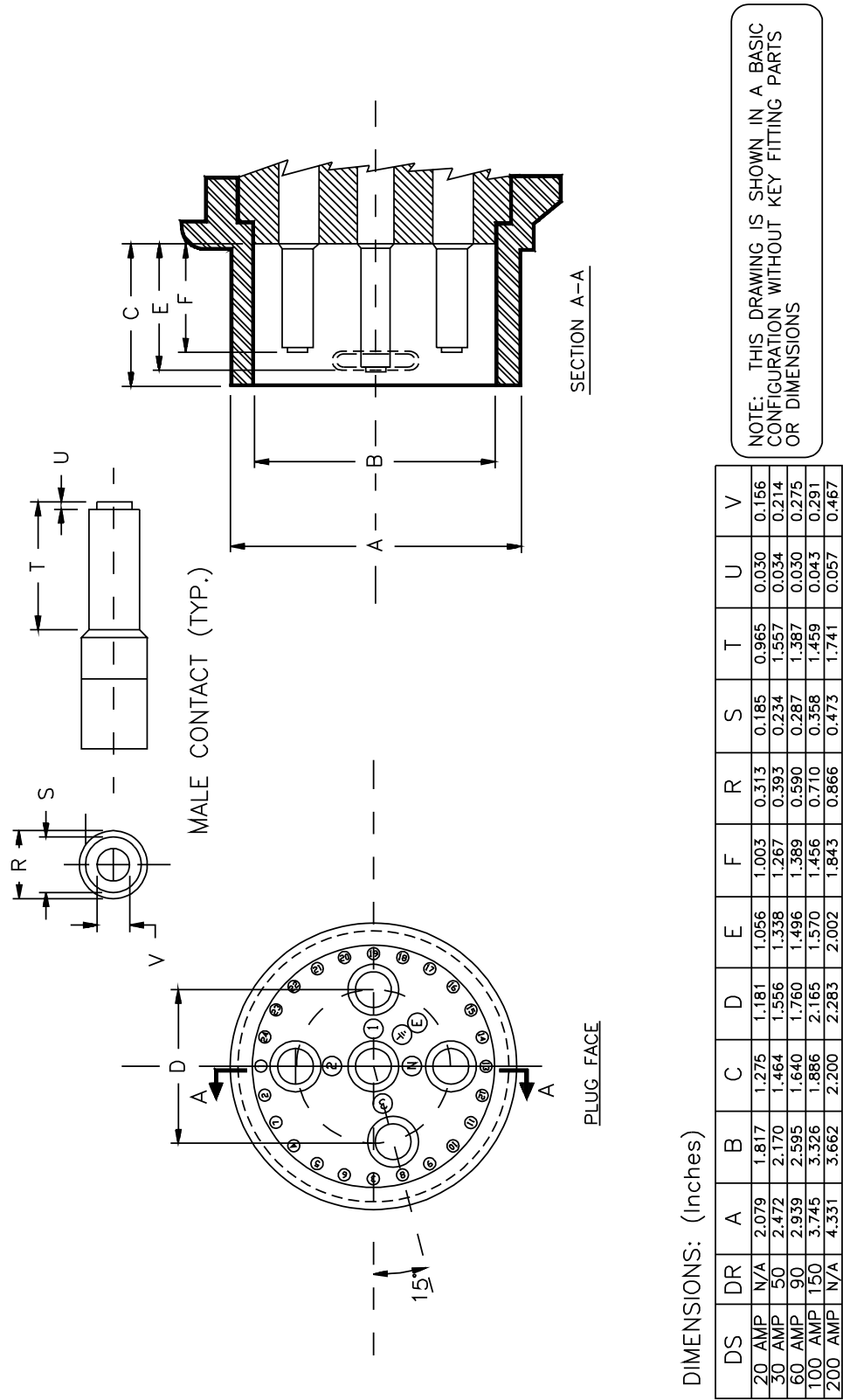
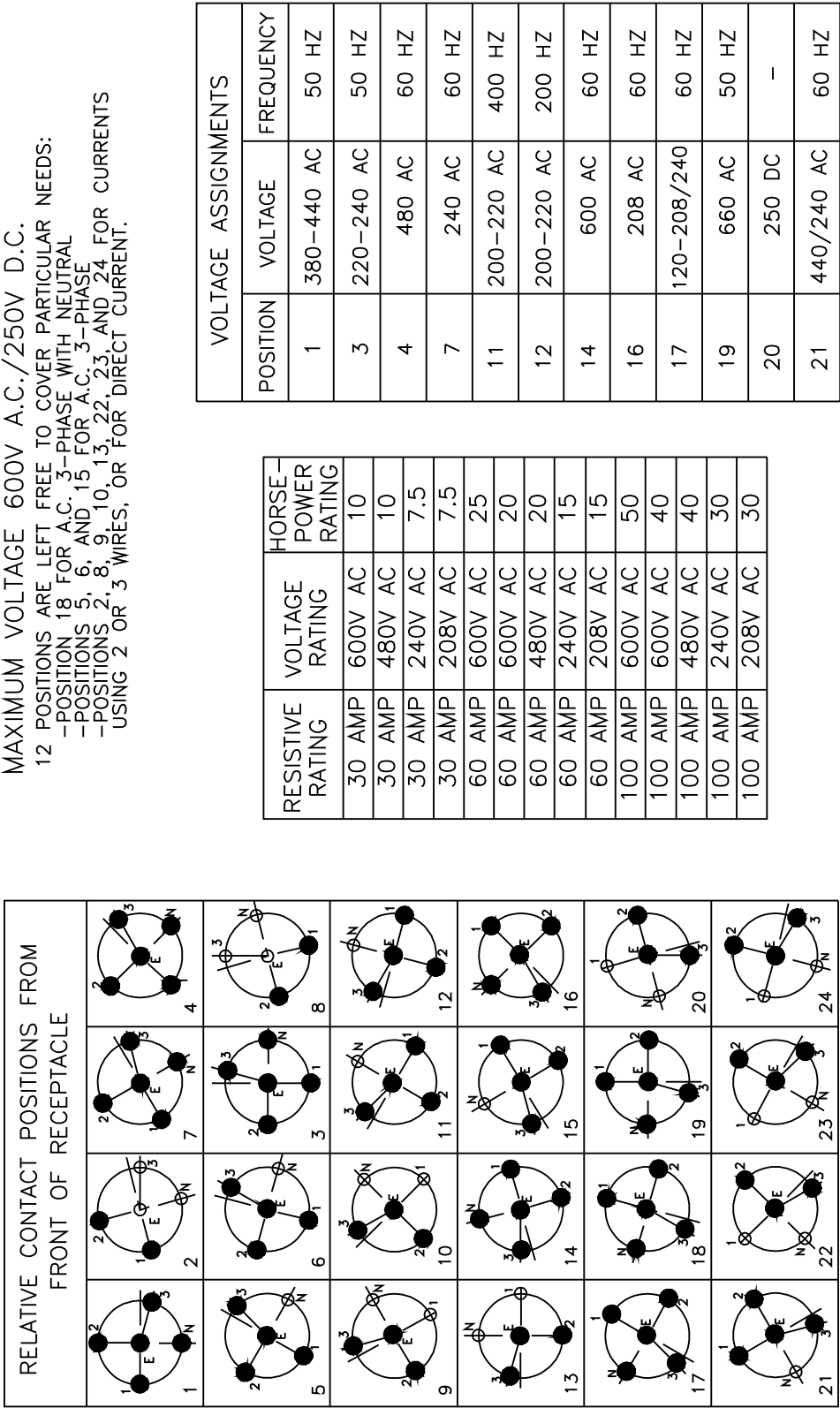
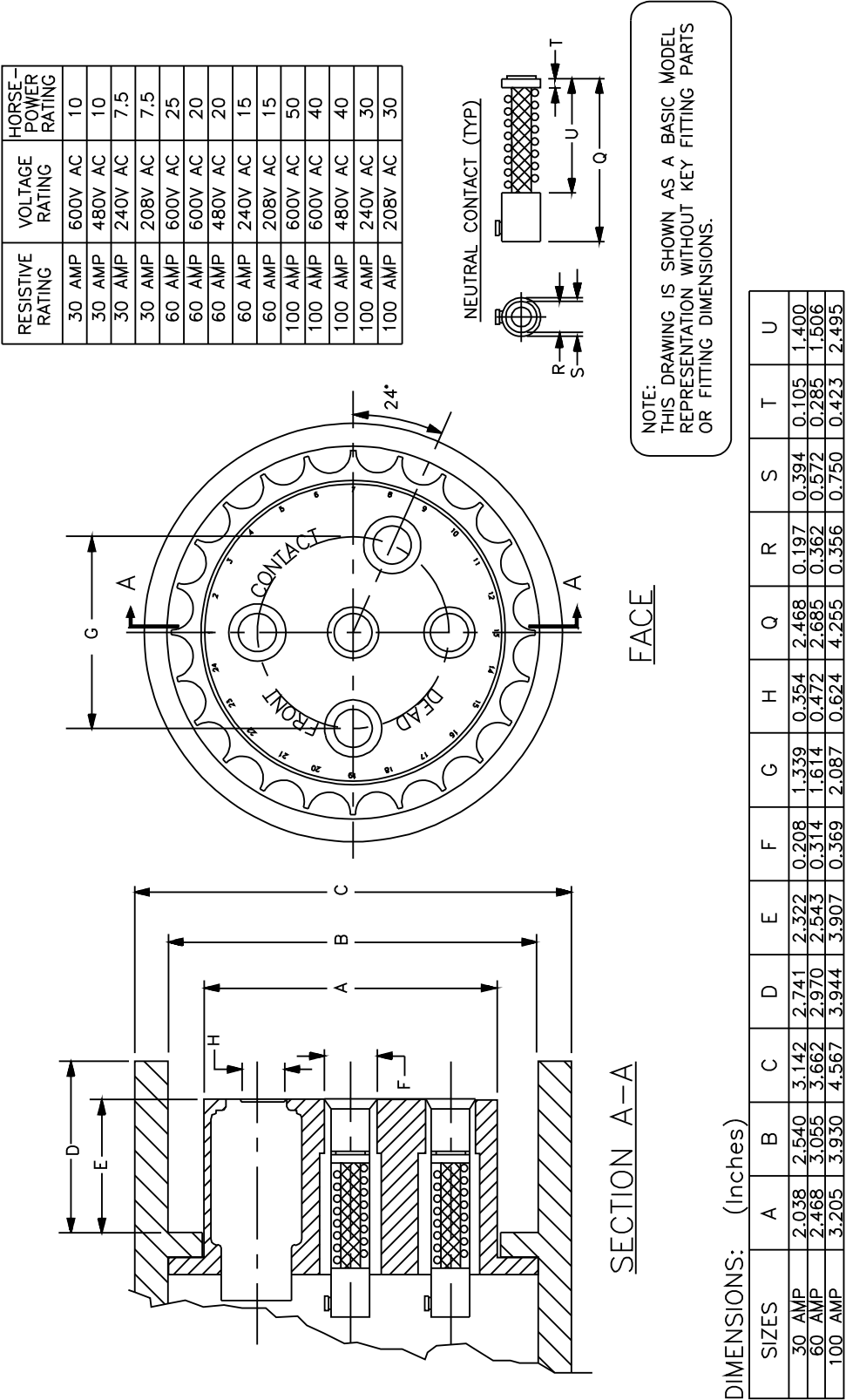


Figure C3.11



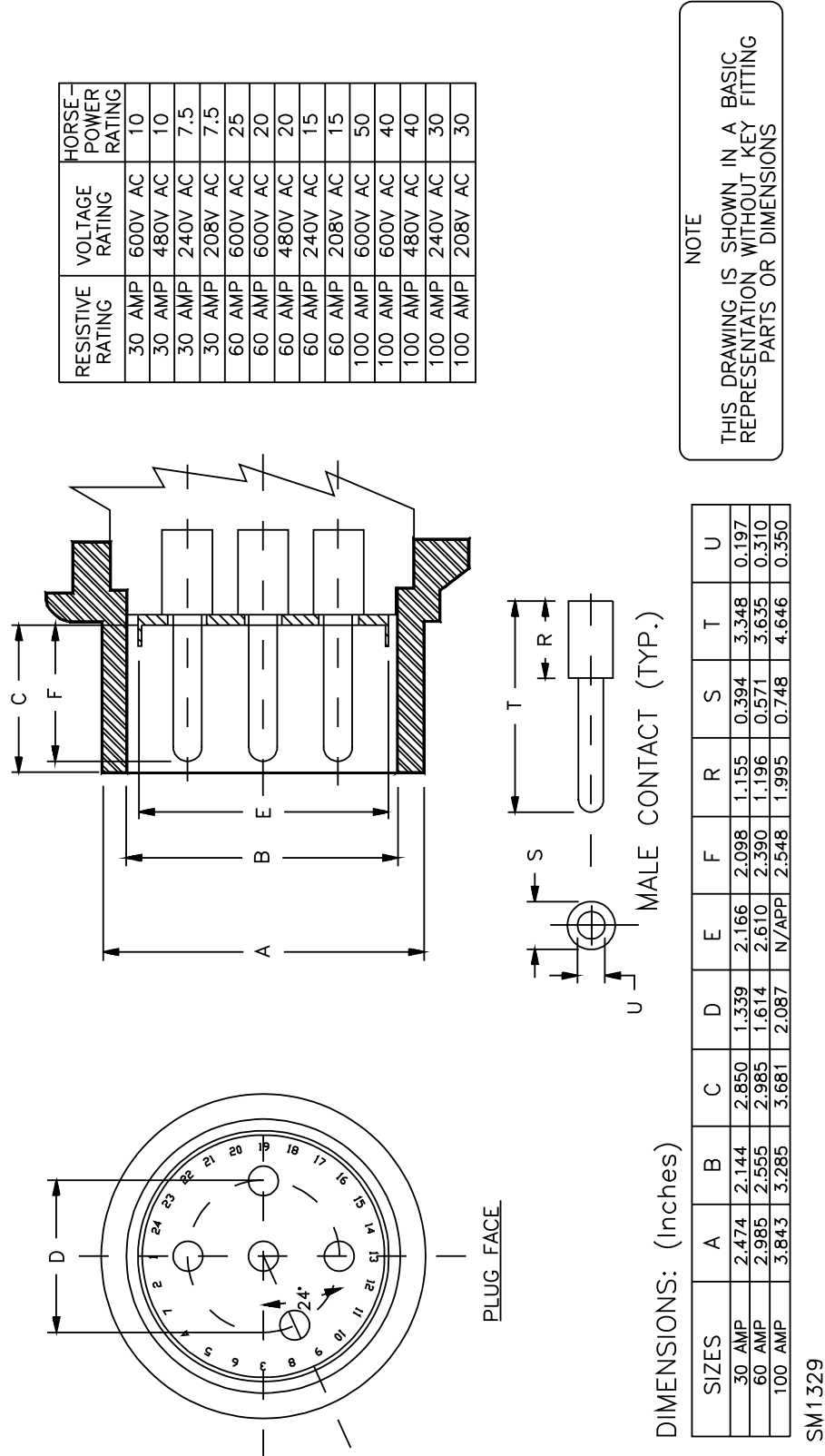
SM1327

Figure C3.12



SM1328

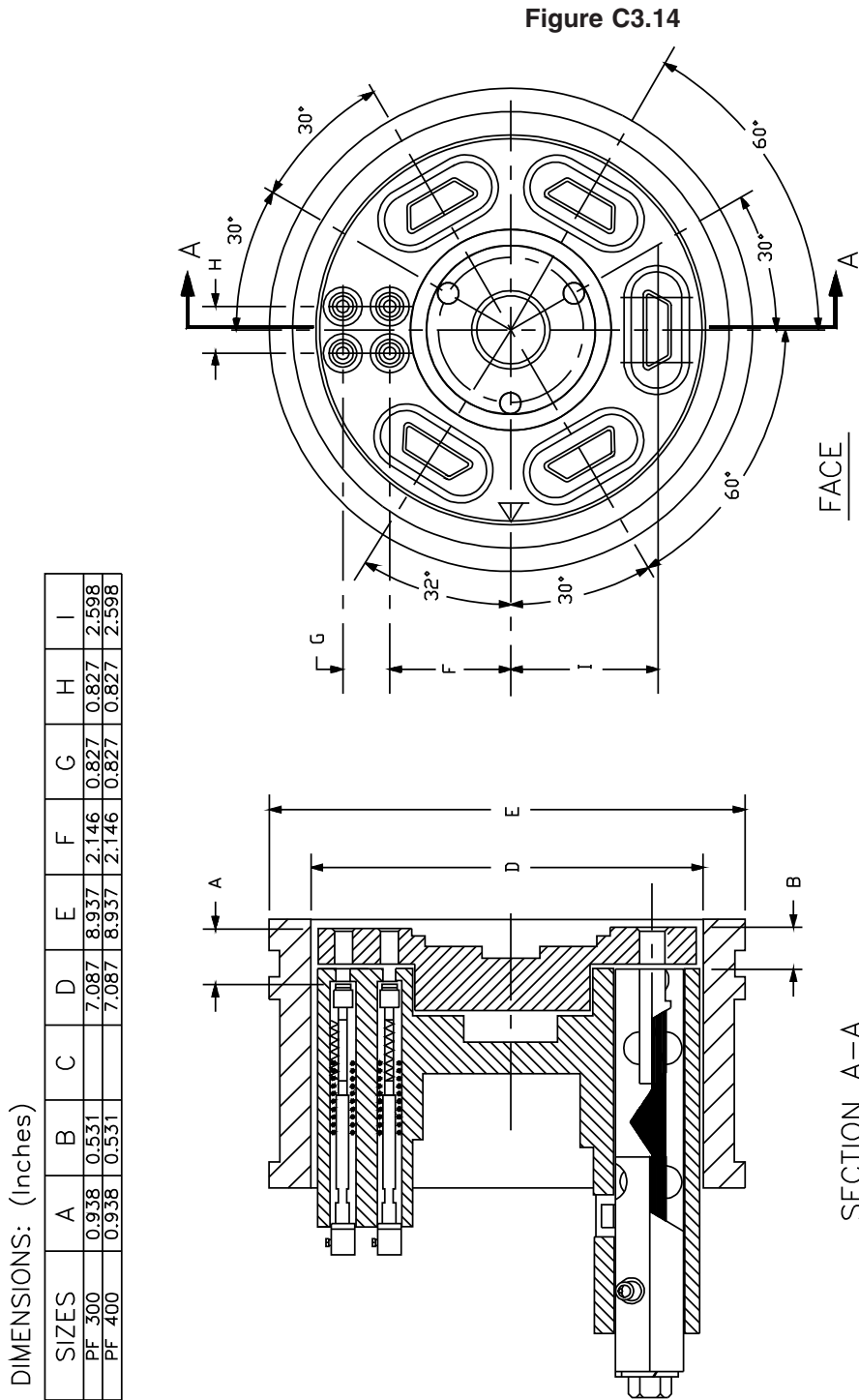
Figure C3.13



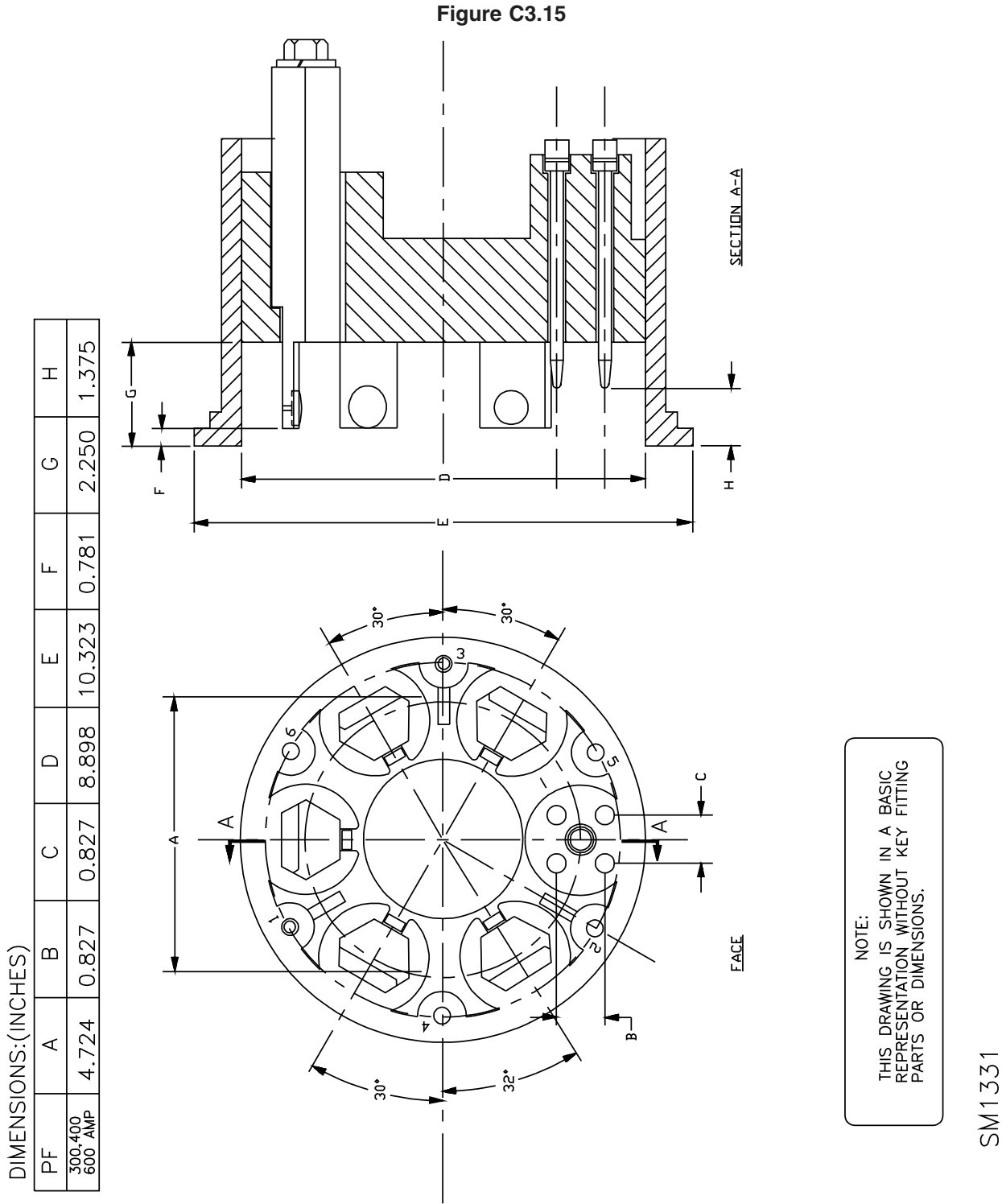
RESISTIVE RATING	VOLTAGE RATING	HORSE-POWER RATING
30 AMP	600V AC	10
30 AMP	480V AC	10
30 AMP	240V AC	7.5
30 AMP	208V AC	7.5
60 AMP	600V AC	25
60 AMP	600V AC	20
60 AMP	480V AC	20
60 AMP	240V AC	15
60 AMP	208V AC	15
100 AMP	600V AC	50
100 AMP	600V AC	40
100 AMP	480V AC	40
100 AMP	240V AC	30
100 AMP	208V AC	30

NOTE

THIS DRAWING IS SHOWN IN A BASIC REPRESENTATION WITHOUT KEY FITTING PARTS OR DIMENSIONS



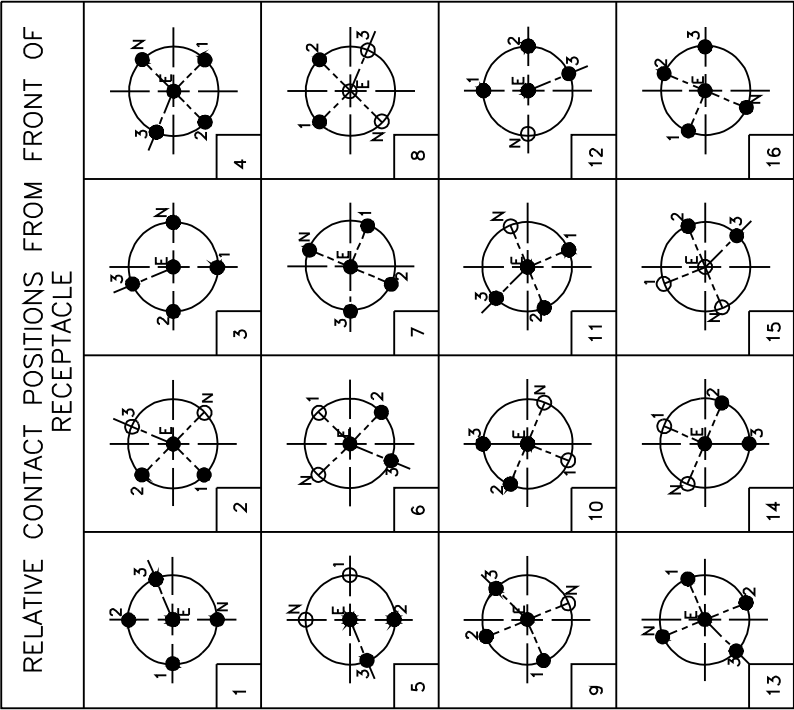
SM1330



MAXIMUM VOLTAGE 600V A.C./250V D.C.

5 POSITIONS ARE LEFT FREE TO COVER PARTICULAR NEEDS:

- POSITION 13 FOR A.C. 3-PHASE WITH NEUTRAL
- POSITIONS 5, 6, 14, AND 15 FOR CURRENTS USING 2 OR 3 WIRES, AND FOR DIRECT CURRENTS.



SM1332

Figure C3.16

VOLTAGE ASSIGNMENTS		
POSITION	VOLTAGE	FREQUENCY
1	380–440 AC	50 HZ
2	24 AC	60 HZ
3	220–240 AC	50 HZ
4	480 AC	60 HZ
7	240 AC	60 HZ
8	24 AC	50 HZ
9	500 AC	50 HZ
10	130 DC	–
11	200–220 AC	400 HZ
12	200–220 AC	200 HZ
16	208 AC	60 HZ