

# JIS

JAPANESE INDUSTRIAL STANDARD

Electric Overhead Travelling Cranes

JIS B 8801 —1974

Translated and Published  
by  
Japanese Standards Association

Printed in Japan

8 S

Translation without guarantee  
In the event of any doubt arising, the original  
standard in Japanese is to be evidence

B 8801-1974

---

Japanese Text

Established by Minister of International Trade and Industry

Date of Establishment: August 14, 1950

Date of Revision: October 1, 1974

Date of Public Notice in Official Gazette: October 3, 1974

Investigated by: Japanese Industrial Standards Committee  
Technical Committee on Electric Overhead  
Travelling Cranes  
(Chairman: KODAMA Masao)  
Divisional Council on General Machinery  
(Chairman: CHŪJŌ Tokusaburō)

---

This English translation is published by:  
Japanese Standards Association  
1-24, Akasaka 4, Minato-ku,  
Tokyo 107 Japan  
1975 ©

## JAPANESE INDUSTRIAL STANDARD

J I S

## Electric Overhead Travelling Cranes

B 8801-1974

1. Scope

This Japanese Industrial Standard specifies the electric overhead travelling cranes with hook mainly for use in indoors of factories and electric power stations etc., hereinafter referred to as the "cranes".

Remark: The terms used for the kinds of cranes shall conform to JIS B 0135-Glossary of Terms Relating to Cranes (Part 1 Kinds of Cranes), the terms used for the construction and ability to JIS B 0136-Glossary of Terms Relating to Cranes (Part 2 Ability and Structure of Cranes), besides the particulars of cranes to JIS B 8820-Safe Working Loads, Rated Speeds and Slewing Radii of Cranes.

2. Kinds of Cranes

The cranes are classified into three kinds of high speed type, ordinary type and low speed type. Some examples of adaptation are indicated in Table 1.

Table 1

Kinds	Example of usage
High speed type	Heavy duty in iron and steel works
Ordinary type	General work in machine shops, assembly shop, foundry and store
Low speed type	Installation work in power station and transformer station, and like work

---

Applicable Standards:

JIS B 0135-Glossary of Terms Relating to Cranes (Part 1 Kinds of Cranes)

JIS B 0136-Glossary of Terms Relating to Cranes (Part 2 Ability and Structure of Cranes)

JIS C 0601-Operation of Handles and Indication of Electric Installations

JIS E 1101-Rails

JIS E 1103-Light Rails

JIS G 3525-Wire Rope

## Reference Standards:

JIS B 8806-Cast Steel Travelling Wheels for Overhead Travelling Cranes

JIS B 8807-Rope Sheaves for Overhead Travelling Cranes

JIS B 8811-Wrought Steel Travelling Wheels for Overhead Travelling Cranes

JIS B 8820-Safe Working Loads, Rated Speeds and Slewing Radii of Cranes

### 3. Basic Requirements of Cranes

The basic requirements of the cranes shall be as follows:

- (1) The particulars of the cranes shall be as indicated in Table 2.
- (2) The construction gauge for the travelling cranes and the side and upper clearances of the hook shall conform to Table 3 and Figs. 1 to 3.
- (3) The clearance between the crane gauge and the construction gauge, and the position of the main trolley wire shall conform to Fig. 1.
- (4) The position of the cab and controllers and the rotational direction of the handles shall conform to Fig. 1 and Figs. 4 to 6.

Fig. 1

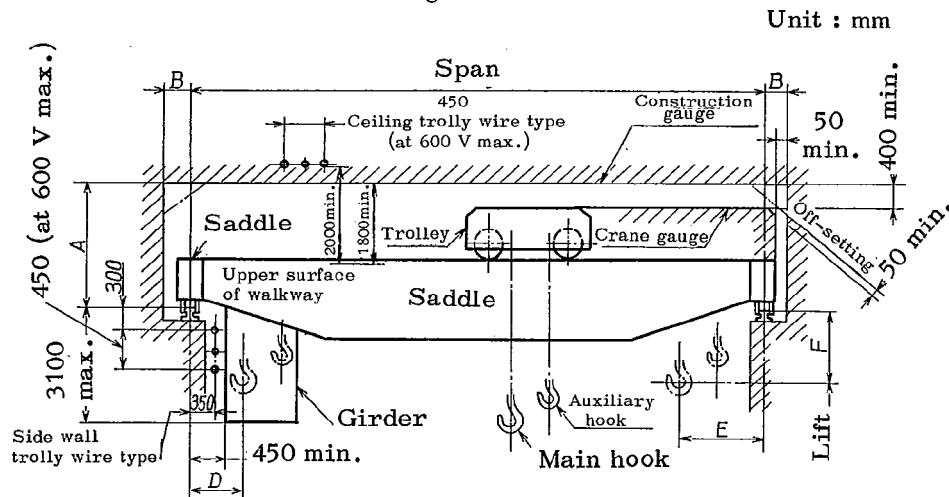


Fig. 2. Saddle

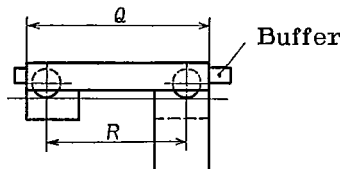


Fig. 3. Saddle (Bogie Type)

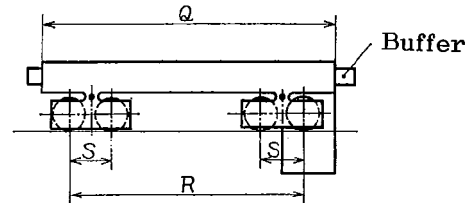


Fig. 4. Auxiliary Winding  
Without

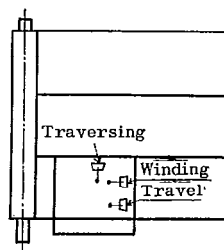


Fig. 5. Auxiliary Winding  
With

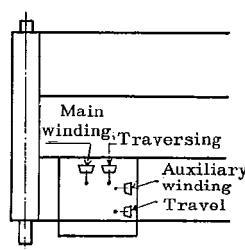
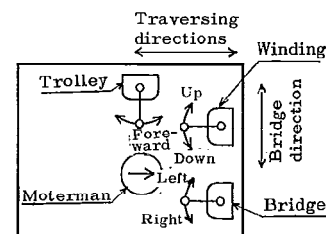


Fig. 6. Handle Operating Directions  
Controller



Remark: Of the movement of controller handle, the directions for hoisting and lowering differ from the stipulation of JIS C 0601-Operation of Handles and Indication of Electric Insulations.