

Key

- 1 body
- 2 rod guidance
- 3 disc/closure element
- 4 bearing
- 5 spring
- 6 direction of flow

A raised-face face-to-face dimension

B weld-end end-to-end dimension

C ring joint end-to-end dimension

NOTE See applicable table in Annex C for dimensions A, B, and C.

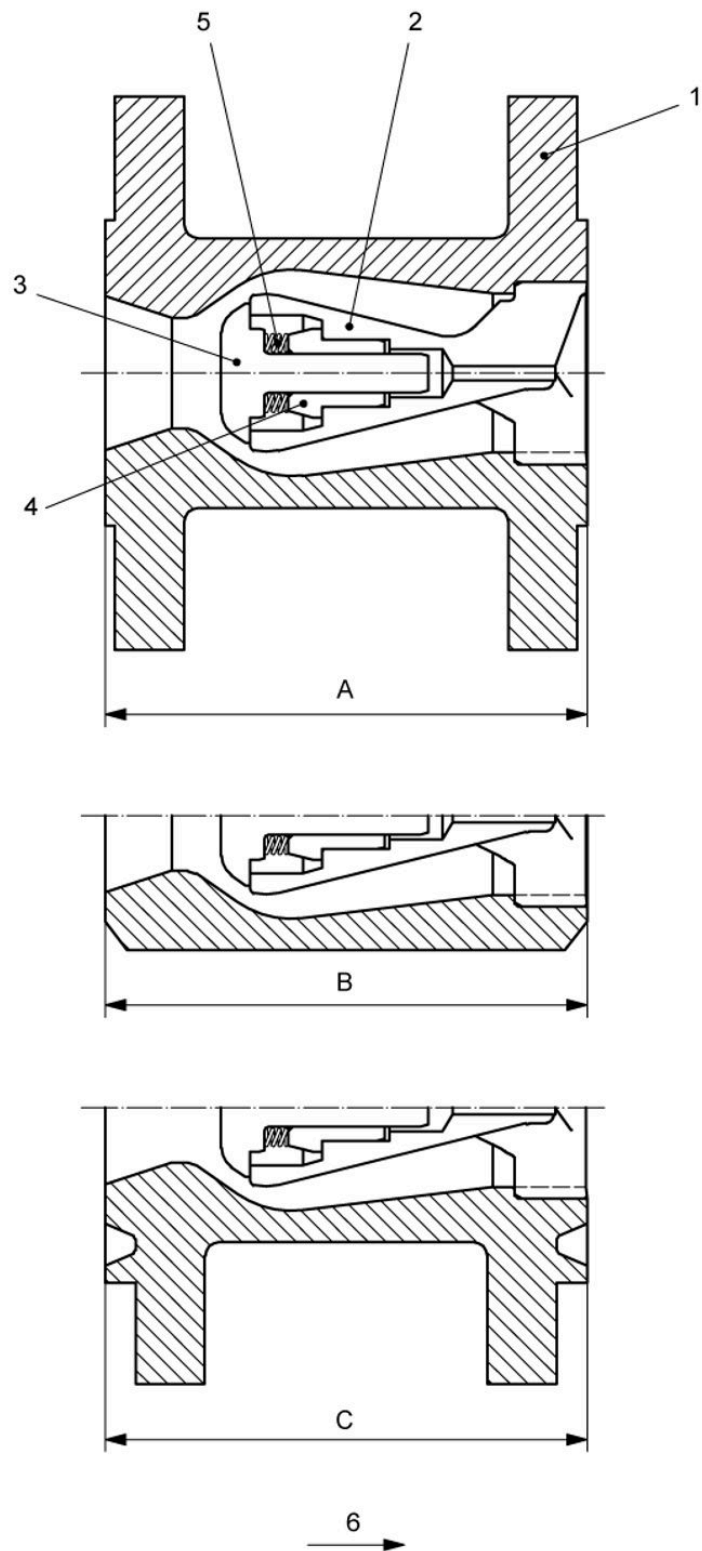


Figure B.6—Check Valve (Axial Flow)

Key

- 1 cover bolting
- 2 cover
- 3 body
- 4 clapper disc arm
- 5 shaft
- 6 clapper/disc/closure element
- 7 seat ring
- 8 support legs
- 9 raised face
- 10 weld end
- 11 ring joint
- 12 direction of flow

A raised-face face-to-face dimension

B weld-end end-to-end dimension

C ring joint end-to-end dimension

NOTE See Table C.1 to Table C.5
for dimensions A, B, and C.

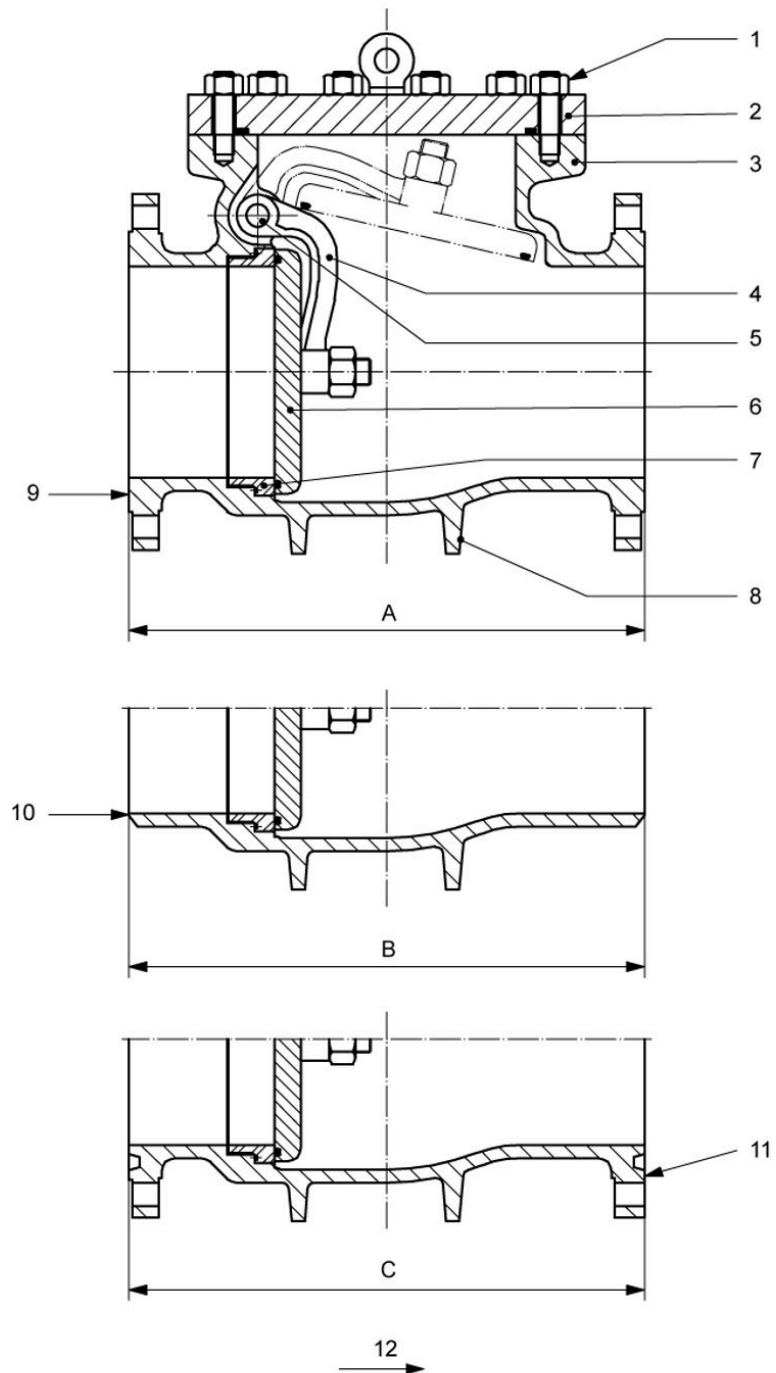
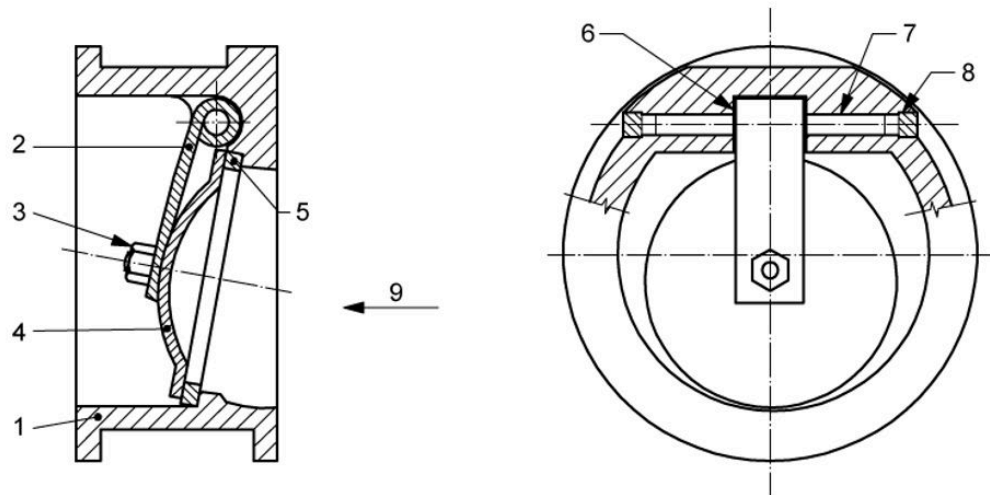


Figure B.7—Check Valve (Full-opening Swing)

**Key**

- 1 body
- 2 hinge
- 3 nut
- 4 closure plate/closure element
- 5 seat ring
- 6 bearing spacers
- 7 shaft hinge pin
- 8 shaft retainers
- 9 direction of flow

Figure B.8—Check Valve (Long Pattern, Single-plate Wafer-type)

Key

- 1 body
- 2 closure plate/closure element
- 3 stop pin
- 4 spring
- 5 shaft hinge pin
- 6 plate lug bearings
- 7 body lug bearings
- 8 stop pin retainers
- 9 shaft retainers
- 10 spring bearings
- 11 direction of flow

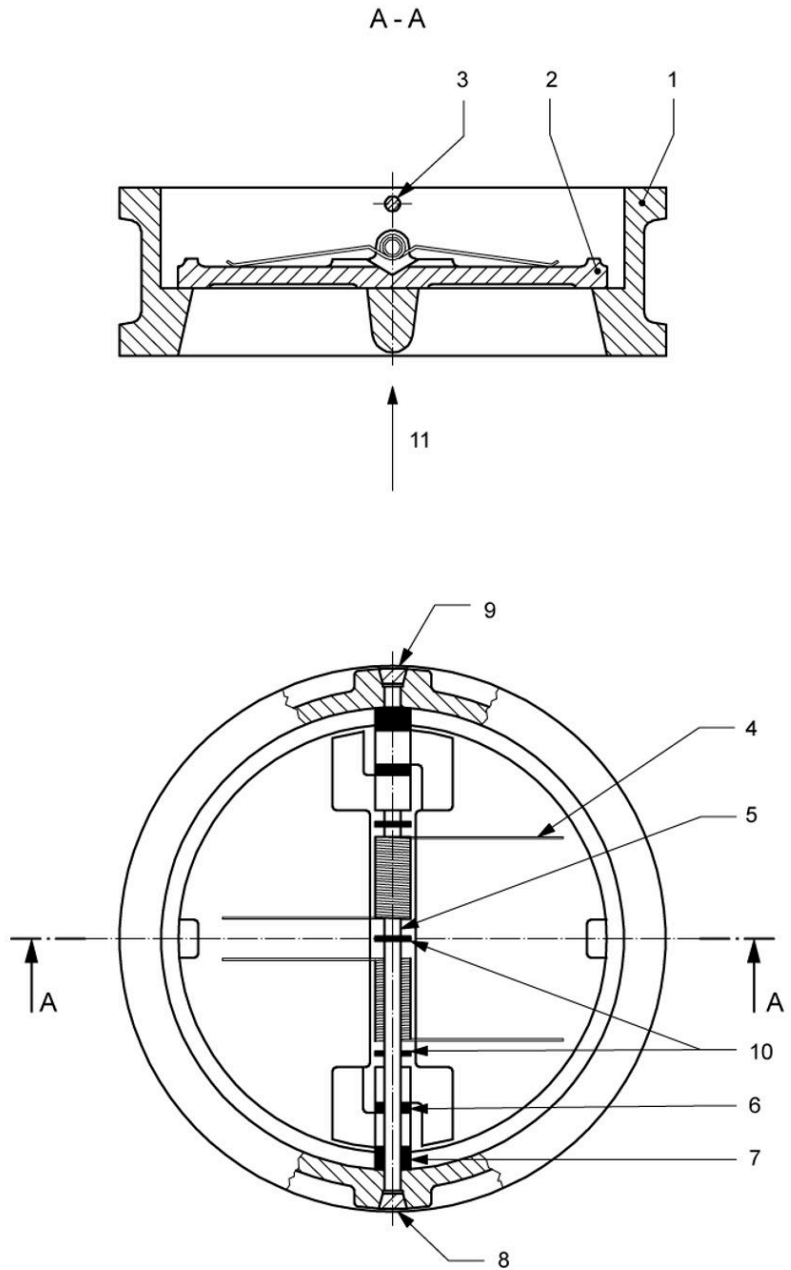


Figure B.9—Check Valve (Long Pattern, Typical Dual-plate Wafer-type)

Key

- 1 cover bolting
- 2 cover
- 3 body
- 4 liner
- 5 piston/closure element
- 6 seat ring
- 7 support legs
- 8 spring
- 9 raised face
- 10 weld end
- 11 ring joint groove
- 12 direction of flow

- A raised-face face-to-face dimension
- B weld-end end-to-end dimension
- C ring joint end-to-end dimension

NOTE See applicable table in Annex C for dimensions A, B, and C.

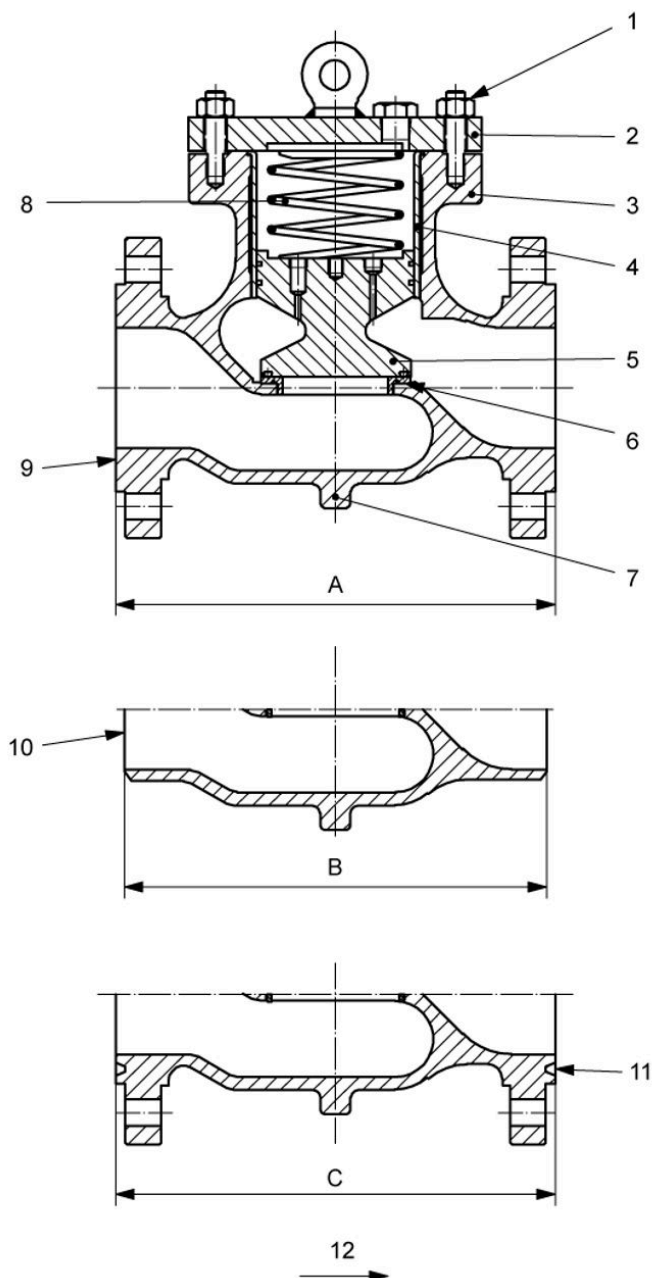


Figure B.10—Check Valve (Piston)

Key

- 1 cover bolting
- 2 cover
- 3 body
- 4 clapper disc arm
- 5 shaft
- 6 clapper disc/closure element
- 7 seat ring
- 8 support legs
- 9 raised face
- 10 weld end
- 11 ring joint groove
- 12 direction of flow

A raised-face face-to-face dimension

B weld-end end-to-end dimension

C ring joint end-to-end dimension

NOTE See applicable table in Annex C for dimensions A, B, and C.

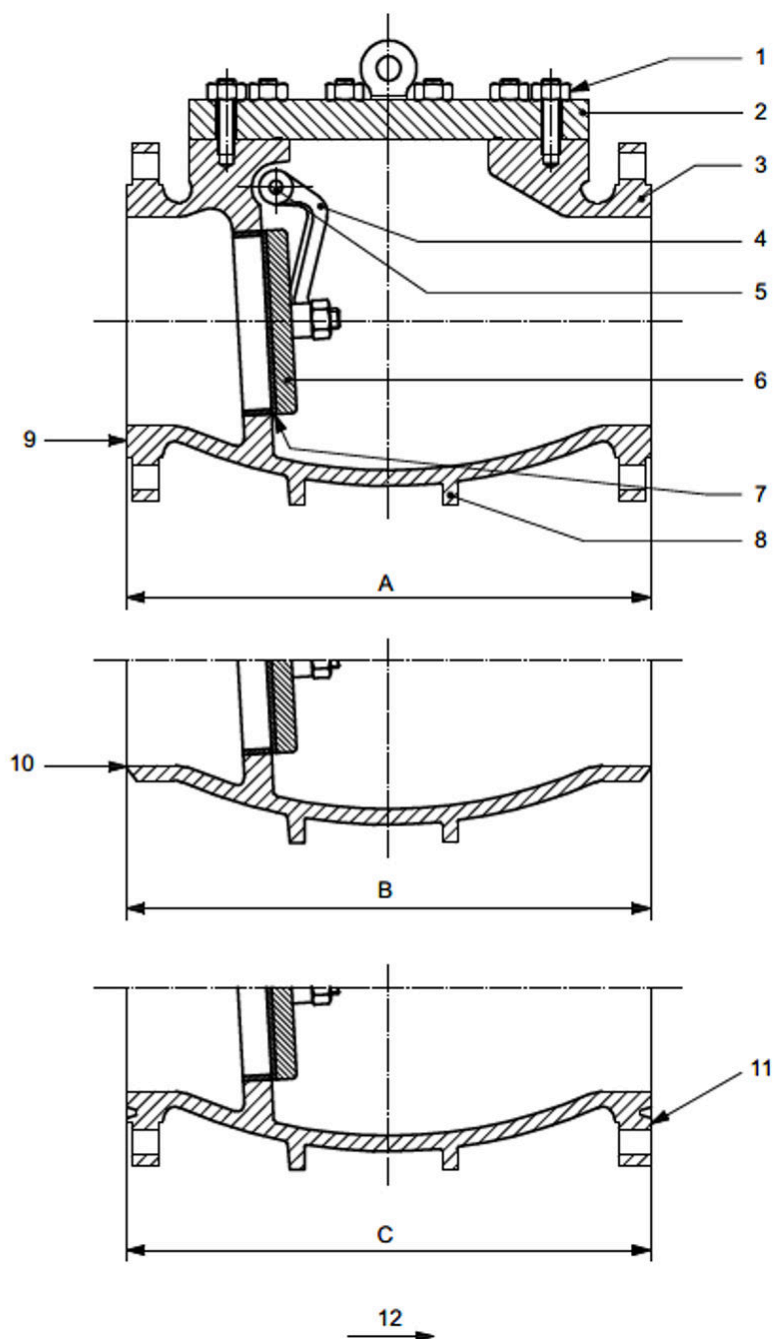
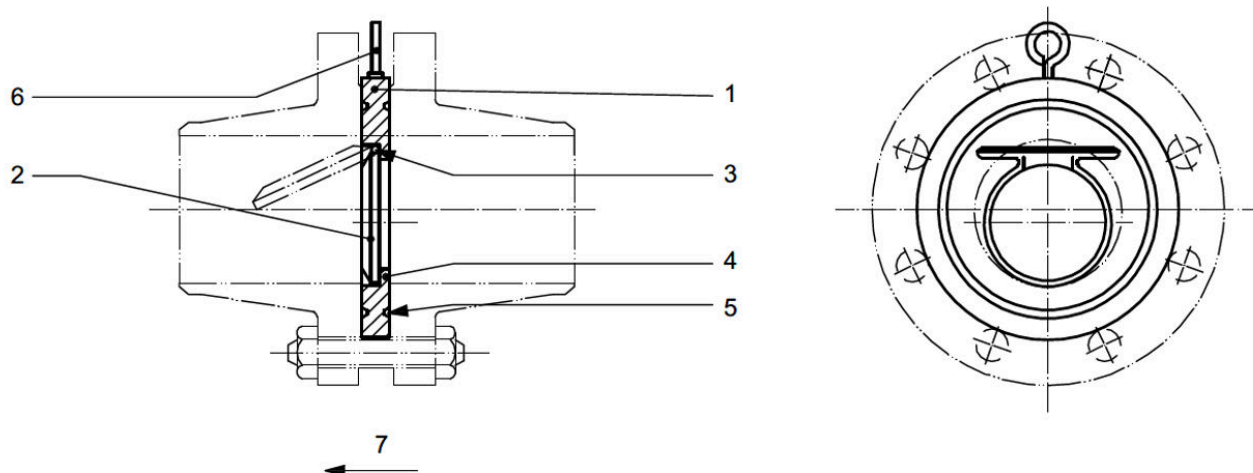


Figure B.11—Swing Check Valve (Reduced-opening)

**Key**

- 1 body
- 2 clapper/disc/closure element
- 3 pin
- 4 clapper seal
- 5 body seal
- 6 lifting eye
- 7 direction of flow

Figure B.12—Check Valve (Short Pattern, Single-plate Wafer-type)

Key

- 1 stem indicator
- 2 stem enclosure
- 3 hand-wheel
- 4 yoke nut
- 5 yoke
- 6 stem
- 7 yoke bolting
- 8 stem packing
- 9 relief valve
- 10 bonnet
- 11 bonnet bolting
- 12 gate guide
- 13 gate assembly/closure element
- 14 seat ring
- 15 body
- 16 support ribs or legs
- 17 raised face
- 18 weld end
- 19 ring joint groove

- A raised-face face-to-face dimension
- B weld-end end-to-end dimension
- C ring joint end-to-end dimension

NOTE See applicable table in Annex C for dimensions A, B, and C.

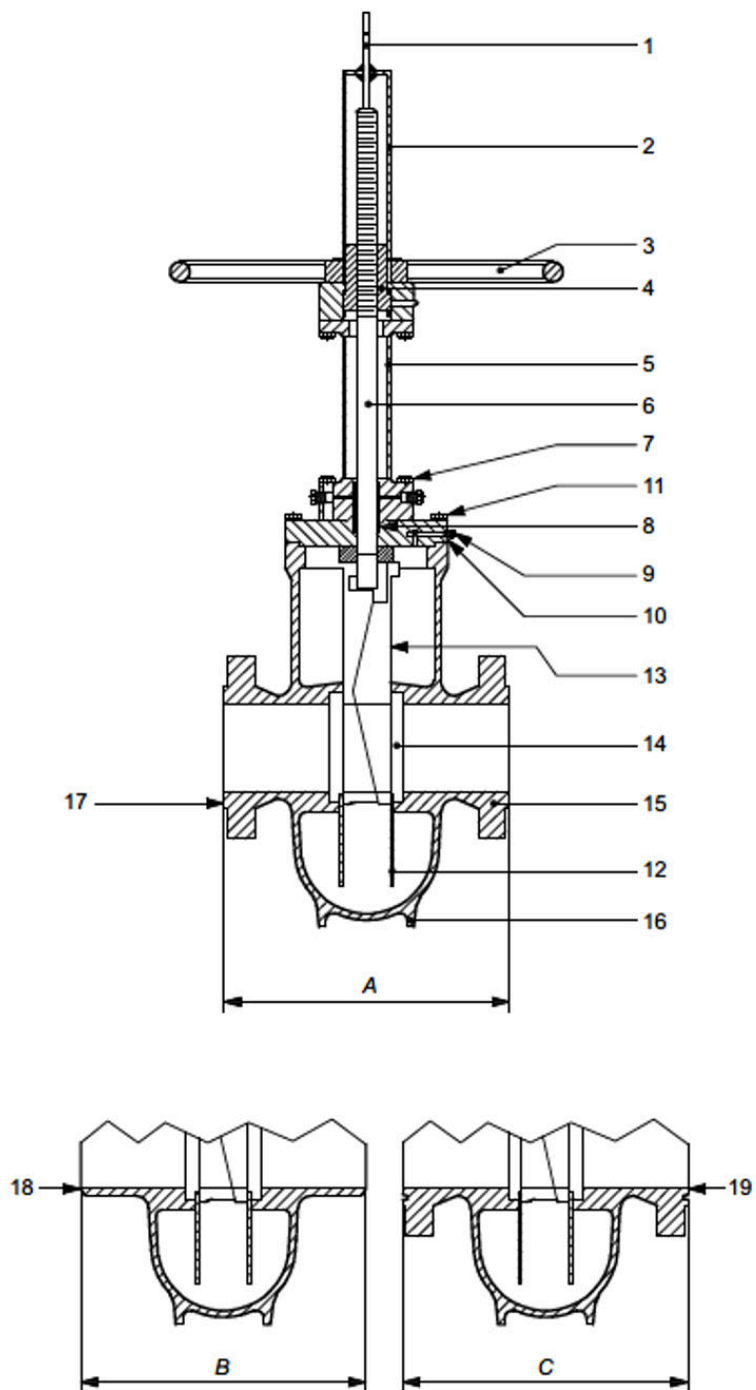


Figure B.13—Gate Valve (Expanding-gate/Rising-stem)

Key

- 1 stem indicator
- 2 stem enclosure
- 3 hand-wheel
- 4 yoke nut
- 5 yoke
- 6 stem
- 7 yoke bolting
- 8 stem packing
- 9 relief valve
- 10 bonnet
- 11 bonnet bolting
- 12 gate/closure element
- 13 seat ring
- 14 body
- 15 support ribs or legs
- 16 raised face
- 17 weld end
- 18 ring joint groove

- A raised-face face-to-face dimension
- B weld-end end-to-end dimension
- C ring joint end-to-end dimension

NOTE See applicable table in Annex C for dimensions A, B, and C.

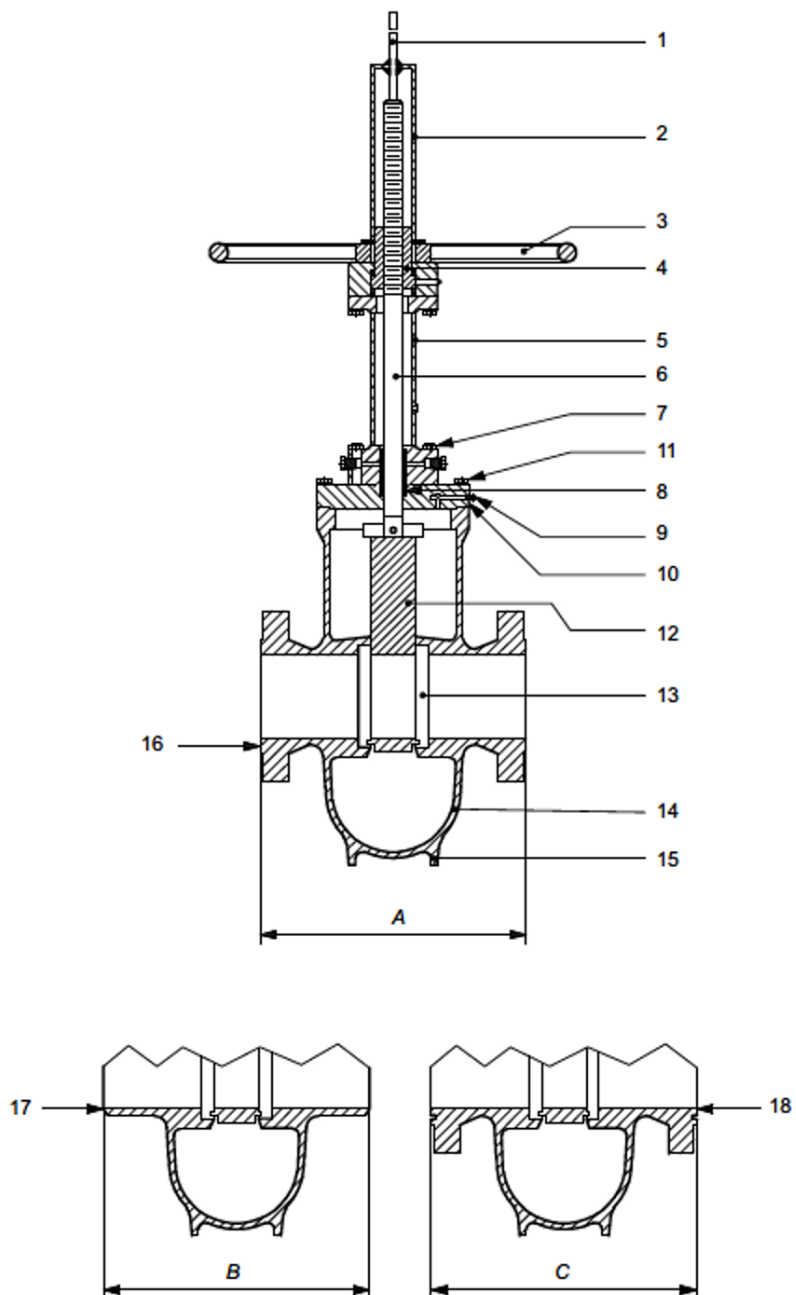


Figure B.14—Gate Valve (Slab-gate/Through-conduit Rising-stem)

Key

- 1 lubricator screw
- 2 gland studs and nuts
- 3 gland
- 4 cover studs and nuts
- 5 cover
- 6 cover gasket
- 7 stem packing
- 8 lubricant check valve
- 9 plug/closure element
- 10 body
- 11 stop collar
- 12 raised face
- 13 weld end
- 14 ring joint groove

A raised-face face-to-face dimension

B weld-end end-to-end dimension

C ring joint end-to-end dimension

NOTE See applicable table in Annex C for dimensions A, B, and C.

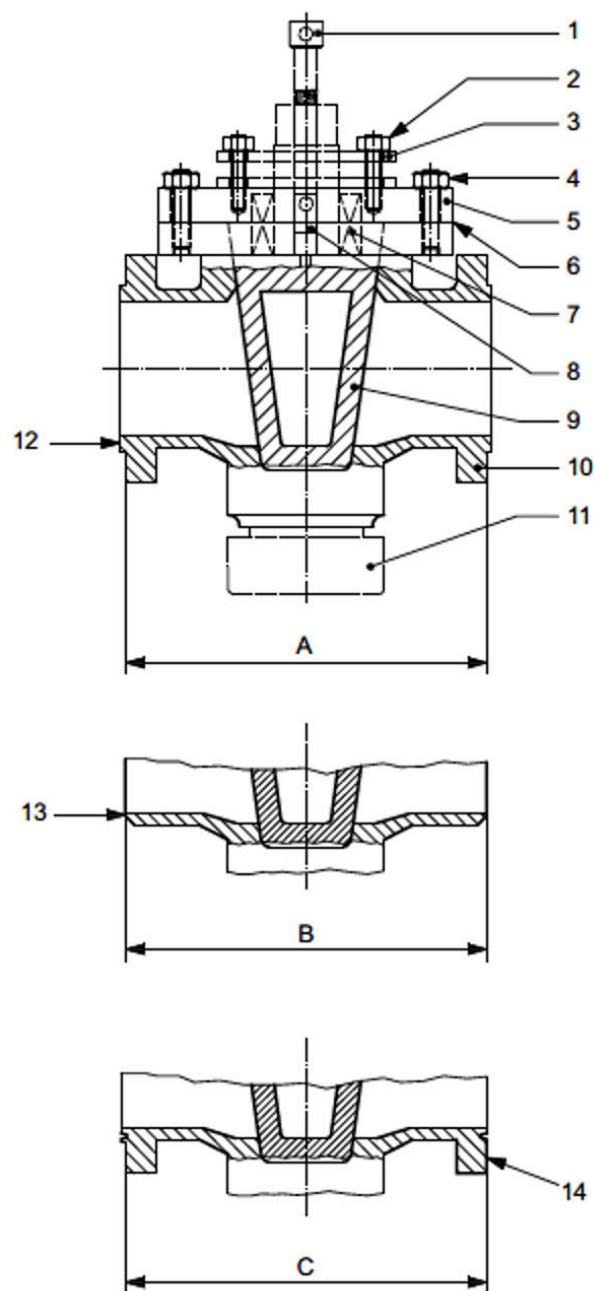


Figure B.15—Plug Valve

Key

- 1 stem indicator
- 2 stem enclosure
- 3 handwheel
- 4 drive nut
- 5 stem
- 6 gland studs and nuts
- 7 gland
- 8 bonnet bolting
- 9 bonnet
- 10 seat
- 11 ball/closure element
- 12 body
- 13 raised face
- 14 weld end
- 15 ring joint groove

- A raised-face face-to-face dimension
- B weld-end end-to-end dimension
- C ring joint end-to-end dimension

NOTE See applicable table in Annex C for dimensions A, B, and C.

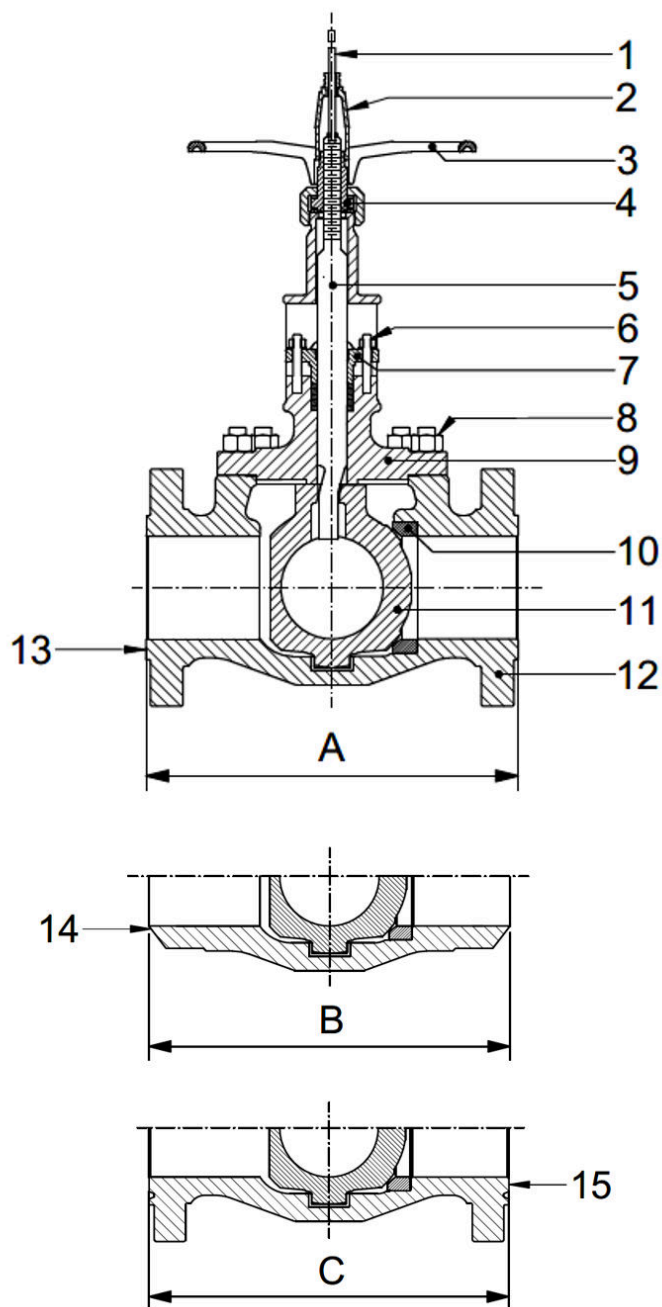


Figure B.16—Rising Stem Ball Valve